

Macq in a nutshell



© Macq SA/NV

The content of this presentation is the property of Macq SA/NV. It may not be passed on to third parties without the written consent of Macq SA/NV

Over 100 years of innovation



Founded in 1923

3rd Generation family business



Smart Cameras since 2001

In-house developed hard- and software



Smart Mobility and Enforcement

Backed by customer service and 2 Product Units



Tailored Business Models

Investment or As-a-Service



More than 100 Employees

Experts in AI and data analytics



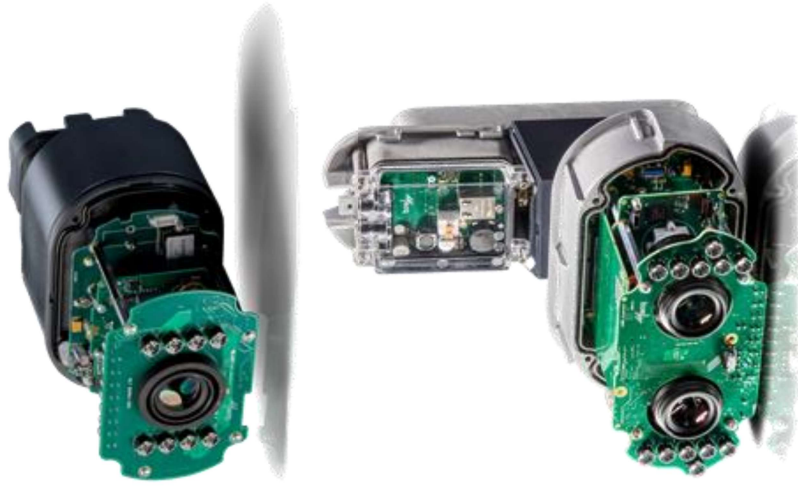
Operating on a global scale

Market leader in Belgium with 4000+ operational cameras
Active in multiple countries worldwide



The potential of Macq ANPR cameras...

Multifunctional cameras



← Back to live

Detection details

Download



Plate
2C 128

Country
BE

Type
HVT

Make
DAF

Model
XG

ADR plates
225 / 1073

Color
BLUE

Speed (km/h)
87

Direction
Approach

Lane
Lane 1

Regulation
Exposure: 1500 µs
Gain: 50 db
Illum. power: 0 %
Illum. duration: 0 µs

Time
14:13:34 15/01/2026 CET

confidential



The potential of Macq ANPR cameras for road works

Multifunctional solutions



Speed section control (>200m)



Seatbelt and phone use enforcement



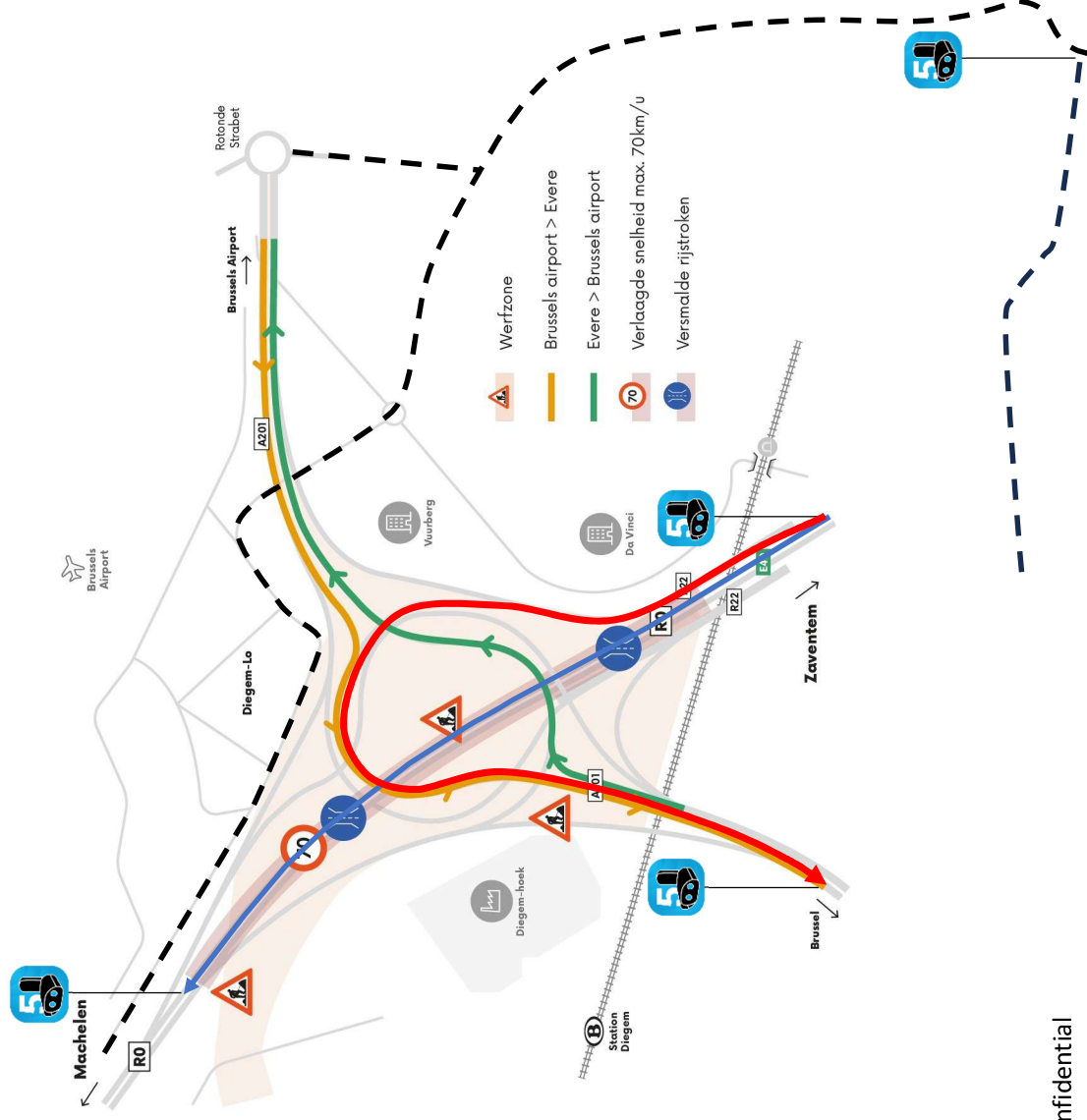
Overstaying



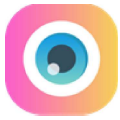
Traffic counts & OD-analysis



Access control (rat runners and/or trucks)



confidential



IHI300
1 detections

17/12/2025 14:05:00 GMT-01:00
GREECE-SC-CAM2

Searched vehicle's details

PLATE	IHI300	100
ANPR-CUTOUT PICTURE		
COUNTRY	GR	99
TYPE	Light vehicle	99
	Car	99
LANE	1	
DIRECTION	Approaching	
MAKE	Vw	99
MODEL	Tiguan	97
COLOR		



GREECE-SC-CAM1

GREECE-SC-CAM1

Previous vehicle

Next vehicle

Initial vehicle

confidential



NHE5 7
1 detections

17/12/2025 14:05:03 GMT-01:00
GREECE-SC-CAM2

Searched vehicle's details

PLATE NHE5 7 100

ANPR-CUTOUT PICTURE

COUNTRY GR 99

TYPE Light vehicle 99
Car 99

LANE 2

DIRECTION Approaching

MAKE Mini 99

MODEL Cooper 99

COLOR

View all results Previous result Next result

1 GREECE-SC-CAM1



GREECE-SC-CAM1

Previous vehicle

Next vehicle

Initial vehicle

confidential



Candidates

Live

- NDM 8
- NHS 0**
- LRC 7
- LK1 E
- EZR 9
- LGD 0
- NNB 6
- EZA 5
- EA7 6
- EB1 9
- MOB 3
- LAL 0
- MMU 74
- KFG 9
- GRV 9
- MLL 2
- MUN 5

1000+ candidates

PLATE: NHS 0

Driver, Middle passenger, Passenger

ANPR-CUTOUT PICTURE: NHS 0

COUNTRY: LT

TYPE: Car

Light vehicle

LANE: 1

DIRECTION: Approaching

MAKE: Lexus

MODEL: RX

COLOR: Blue



confidential



Candidates

- Live
- NDM 8
- NHS 0**
- LRC 7
- LK1 E
- EZR 9
- LGD 0
- NNB 6
- EZA 5
- EA7 6
- EB1 9
- MOB 3
- LAL 0
- MMU 4
- KFG 9
- GRV 9
- MLL 2
- MUN 5

1000 - candidates

PLATE: NHS 0

Driver Middle passenger Passenger

ANPR-CUTOUT PICTURE: NHS 0

COUNTRY: LT

TYPE: Car

Light vehicle

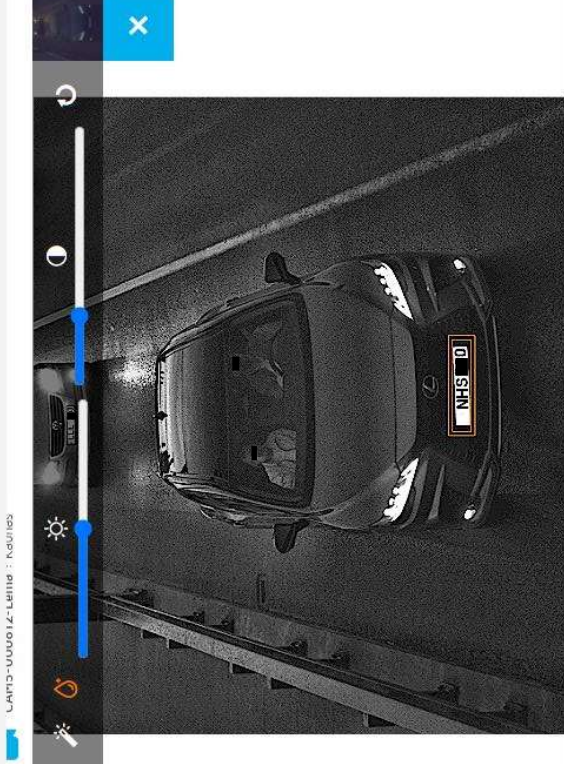
LANE: 1

DIRECTION: Approaching

MAKE: Lexus

MODEL: RX

COLOR: Blue



confidential



Candidates

Live

- NDM 8
- NHS 0**
- LRC 7
- LK1 6
- EZR 9
- LGD 0
- NNB 6
- EZA 5
- EA7 6
- EB1 9
- MOB 3
- LAL 0
- MMU 4
- KFG 9
- GRV 9
- MLL 2
- MUN 5

1000 - candidates

PLATE: NHS 0

Driver:

Middle passenger:

Passenger:

ANPR-CUTOUT PICTURE:

COUNTRY: LT

TYPE: Car

Light vehicle

LANE: 1

DIRECTION: Approaching

MAKE: Lexus

MODEL: RX

COLOR: Blue

100

99

99

99

99

76

90



confidential





Candidates

- Live
- ZNO6 0
- HKA 6
- IYT8 2
- BKO6 2
- TAA2 5
- TAB7 8
- ZXX9 0
- TAB6 1
- TNM5 0
- ZXE7 0
- TAA6 2
- BKZ8 2
- XEX4 9**
- ZNO6 7
- EMH3 9
- ZNK9 0
- ITX3 4

851 candidates

Seatbelt & Phone

XEX4 9

Seatbelt & Phone

PLATE: XEX4 9 100

Driver 100 Middle passenger 100 Passenger 100

AMPR-OUTOUT PICTURE: XEX4 9

COUNTRY: GR 98

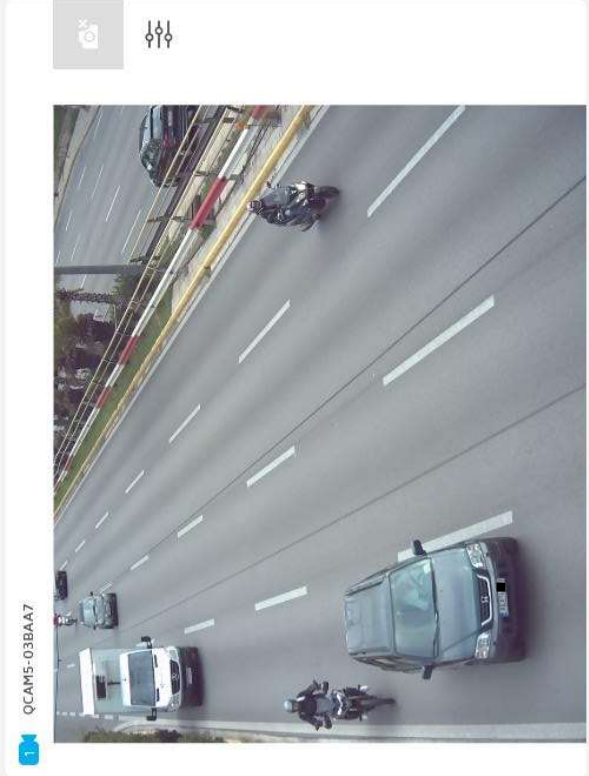
TYPE: Light vehicle 98 Car 98

LANE: 1

DIRECTION: Approaching

MAKE: Honda

MODEL: 98

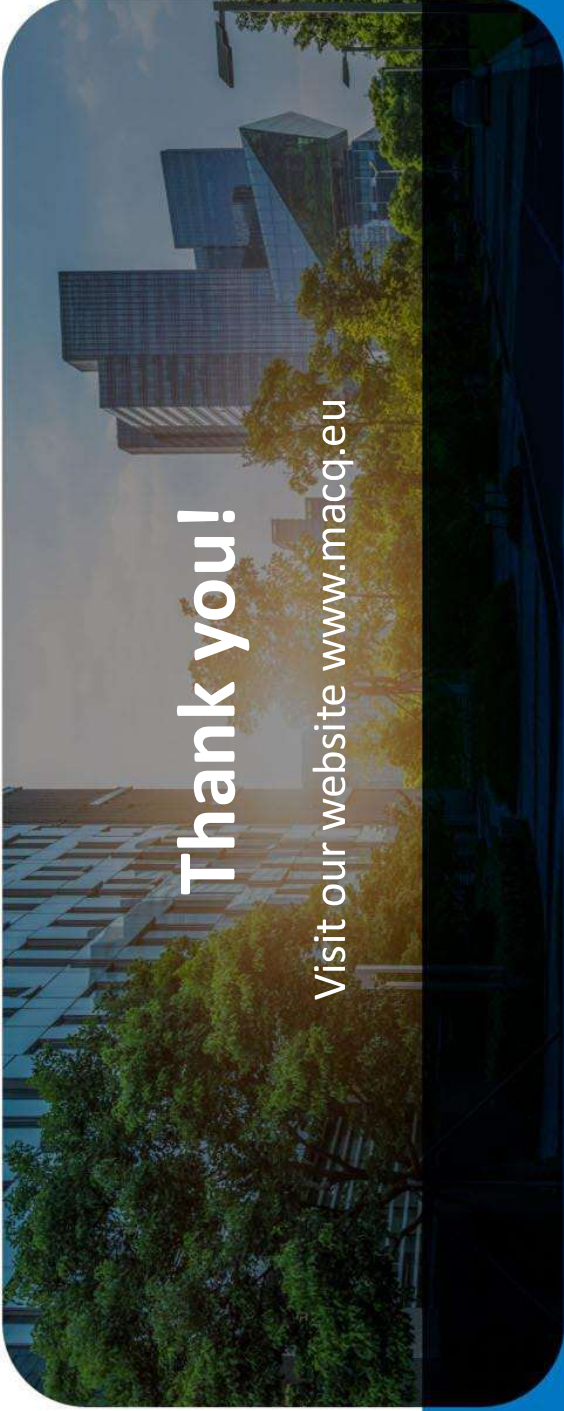


confidential



Show, don't tell

You handle the location and installation,
We provide the cameras and platform.



Thank you!

Visit our website www.macq.eu

